

ONE STEP AHEAD

Falcon Series

Premium Outdoor Fixed Installations





Falcon series is designed to meet expectations of outdoor DOOH screens, with pixel pitches of 2.9 and 3.9mm. It achieves higher brightness up to 6,500-7,000 nits with lower power consumption. To fit different needs, it can be installed curved, flat or at corner. Thanks to the fully front maintenance and installation design and the ultra-thin cabinet, it can perfectly blend in with the architecture and greatly save space.

Excellent Reliability



Deformation-proof Module



Front & Rear IP65



High-efficiency Heat Dissipation

Superior Image Quality



High Brightness



High Contrast Ratio



High Refresh Rate



Better Flatness

Easy Installation



Fully Front Maintenance & Installation



Super Slim Wall Mounting



Multiple Ways in Installation



Smart Module



Fixed & Rental

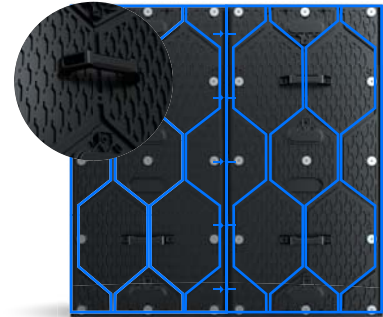
Excellent Reliability



Deformation-proof Module

1, Unique design by Uniview to greatly reduce deformation.

No visible deformation even at -30°C or 80°C .



2, Screws applied in addition to magnets on module.

On P2.97 where it's impossible to have screws for front service, Uniview patented design is applied to secure the module from front.

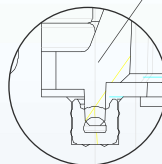
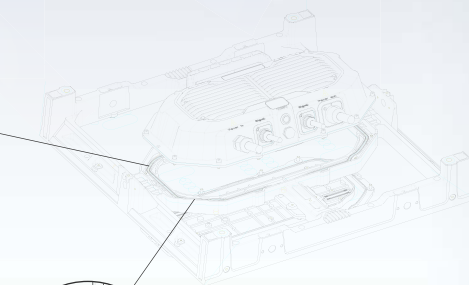


Proven Safe

Sealing design for power box from car industry, proven reliable for decades.

Front & Rear IP65

O Ring



Hollow O ring embedded in the groove, to form a tighter seal.



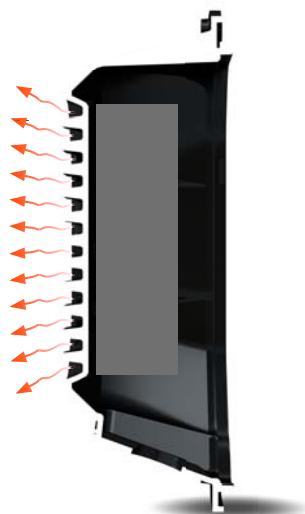


Improved Heat Dissipation on Power Box - Really Cool

Surface area for heat dissipation
increased by 40%.



First Generation



Falcon

* Test data from comparison to Tekken/UO series.



◀ Superior Image Quality

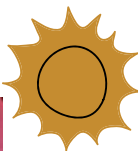


High Brightness

Clear and vivid image even in direct sunlight with brightness up to 6,500-7,000 nits.*



Conventional



Falcon series

* Only on P3.9 for the moment, upon request.



High Refresh Rate

3840hz refresh rate for high dynamic range pictures.



Conventional



Falcon series



High Contrast Ratio

Long-louver design greatly improves the contrast ratio, to deliver lifelike colors.



Conventional



Falcon series



Better Flatness

Super strong die-cast aluminum cabinet ensures better flatness.



Easy Installation



Fully Front Maintenance and Installation

No need to reserve space behind the screen at all.



Conventional

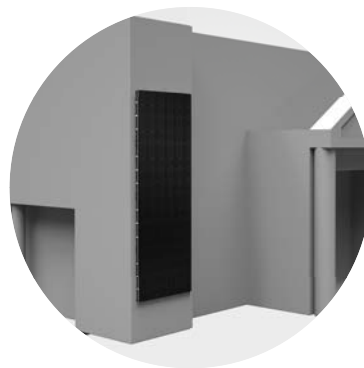


Falcon series



Super Slim Wall Mounting

Falcon series is only at 89mm depth.

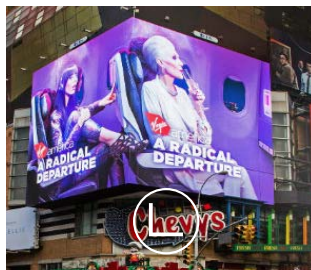


Multiple Ways in Installation

Falcon series can be installed curved, flat or at corner according to your needs, more flexible.



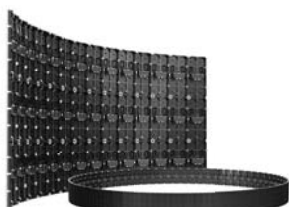
Curved



Corner



Flat



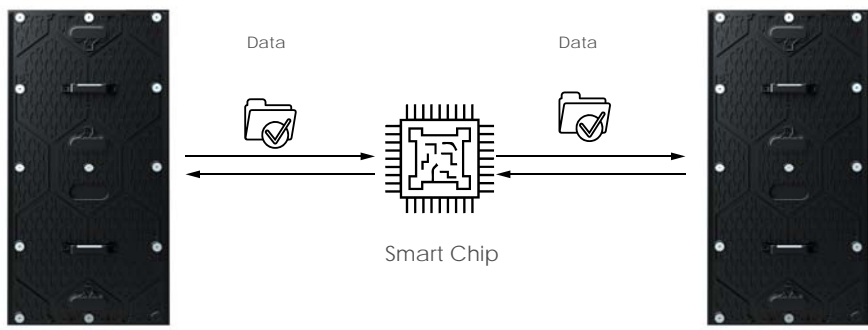
Curved angle: $\pm 10^\circ$.
Minimum diameter: 5.73m.





Smart Module

The built-in smart chip can easily monitor the working status of the cabinet. Besides, there's no need to calibrate again after replacement of module with the memory on module to store calibration data.



*Smart module is an optional function upon request. Ask your sales rep for details.



Fixed & Rental

Falcon series can be used for fixed installation or rental application. Quick installation and dismantling can be realized with the rental locks.



	FA2.9	FA3.9
Pixel Pitch (mm)	2.97	3.90
LED Type	SMD1516 (White/Black)	
Module Size (mm)	250x250	250x500
Module Resolution	84x84	64x128
Cabinet Size (W×H×D)(mm)	500×500x89	500×1,000x89/500×500x89
Cabinet Resolution	168x168	128x256/128x128
Brightness (cd/m²)	Black SMD 4,000-5,000;White SMD 5,000-7,000	
Cabinet Weight (kg/pcs)	10	15/10
Viewing Angle (H/V)(°)	140/90	
Gray Scale (bits)	≥14	
Power Consumption (Max./Avg.)(W/m²)	720/240	
Work Voltage (V)	AC100-240	
Refresh Rate (Hz)	≥3840	
Contrast Ratio	4,500:1	
Storage Temperature (℃)	-40～+85	
Operating Temperature (℃)	-20～+45	
Operating Humidity	10-90% RH	
Life Span (Hours)	100,000	
IP Rating (Front/Rear)	IP65/IP65	
Curved Angle (°)	±10.0 (Optional)	
Maintenance	Front or Rear	
Installation	Front or Rear	
Certifications	EMC/ETL	

Remark: Power consumption tolerance: ±15%, according to the actual situation.



SHENZHEN UNIVIEW LED CO.,LTD

☎: 86-755-3358-1900
✉: sales@univiewled.com
🌐: www.univiewled.com
📍: Bldg.A, Meicheng Industrial Park, Langjing Road,
Dalang St., Longhua District, Shenzhen.

UNIVIEW EUROPE B.V.

☎: +31 402026113
📍: Verdunplein 9, 5627 SZ Eindhoven, the Netherlands.